



## gnuBox with Nokia 3230

This tutorial shows how to connect a Nokia 3230 to the Internet through a Bluetooth connection. Please be sure to backup your mobile phone before proceeding to any steps described in this tutorial!

### Requirements

- gnuBox for Nokia 3230 ([http://gnubox.dnsalias.org/gnubox/gnubox\\_3230.sis](http://gnubox.dnsalias.org/gnubox/gnubox_3230.sis))
- Internet connection (I was using AOL Dial-In for this tutorial)
- Analog X Proxy (<http://www.analogx.com/contents/download/network/proxy.htm>)
- mRouter Software v2 or v3

If you own other Symbian based Smartphones, you can use the installed mRouter. With Sony Ericsson you just need to double click on this icon (My P900):



If you own an A9250/A920 you can launch the Desktop suite:



If you don't have these softwares installed, you can download for free, the mRouter 3 from the Intuwave website: <http://developer.intuwave.com/Downloads>

- A Bluetooth dongle with WIDCOMM Bluetooth Software

### Step to step installation

#### Step1

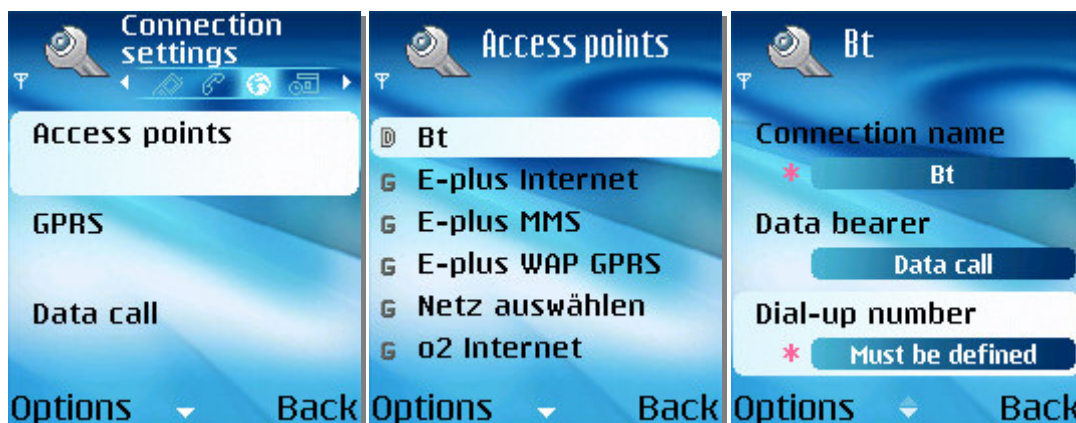
On the Nokia 3230:

1. Install gnuBox\_3230.sis
2. Launch gnuBox
3. Some configuration text will be displayed:

```
(Loading CommDb settings)
ISP 'Bt' Not found
```

4. Chose **Debug** -> **Dump Full CommsDB** and wait till the confirmation dialog box appears (about 10 seconds)
5. **Option**->**Exit** (don't do an Application Switching)
6. Now we are going to add an Access Point

**Settings->Connection->Access Points->Options->New access point->Use default settings**



Fill the configuration with these settings:

**Connection Name:** Bt (be sure to type this name correctly)  
**Data Bearer:** Data Call  
**Dial-Up Number:** 321 (it's a number that can't actually be called)

Once done:

Go to: **Options->Advanced settings** and enter these settings:



**Phone IP Address:** automatic  
**Primary Name Server:** 0.0.0.0  
**Second Name Server:** 0.0.0.0  
**Proxy serv. Address:** 169.254.1.68  
This is the fixed IP address used by mRouter  
**Proxy port number:** 6588  
We are going to take the default port number used by the AnalogX Software.  
Of course if you are using another HTTP Proxy Software, change this value to your port number

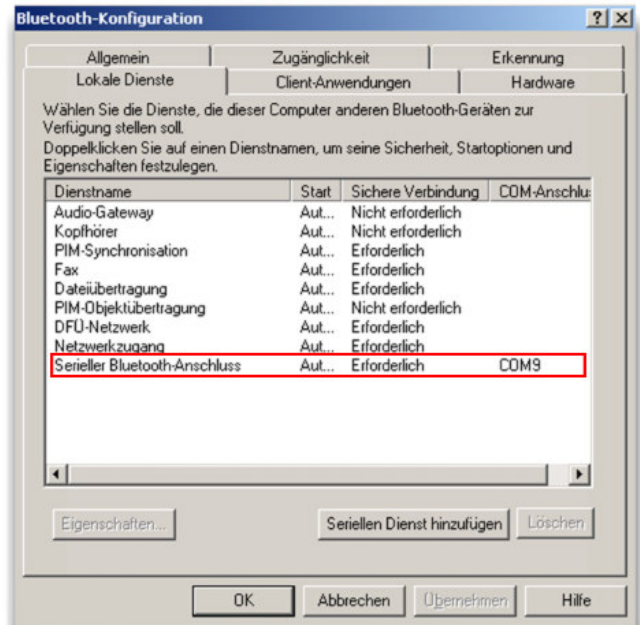
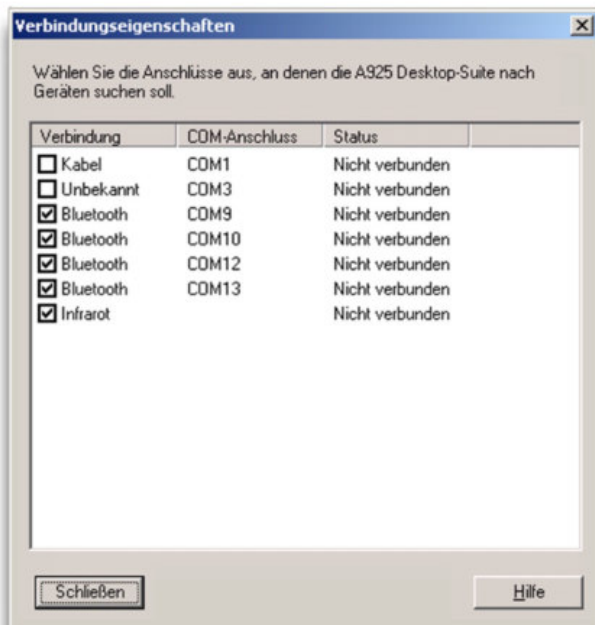
## Step 2

On the PC:

1. Launch the mRouter (either by clicking these icons :)

You should see this icon in the tray bar: 

2. Check that the Bluetooth COMs shown in the mRouter Properties (right click on tray Icon->Properties) are corresponding to the Bluetooth Serial Port COMs from the Bluetooth Software.



3. Before trying to init the serial connection, be sure the devices are paired.

### Step 3

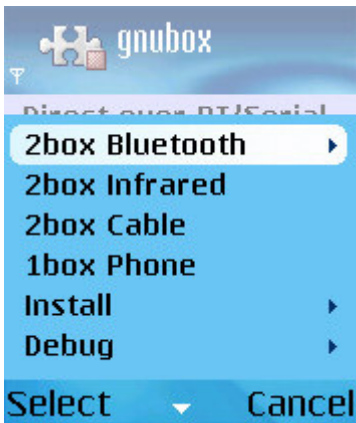
On the Nokia Phone

Now it's time to configure the Nokia Phone in order to connect to our mRouter and proxy through Bluetooth.

1. Launch gnuBox
2. **Options -> Install -> Create Records**



3. **Options->Exit**
4. Relaunch gnuBox
5. **Options->2box Bluetooth->Serial Port**



6. You will be asked to choose a Bluetooth Device.

6.1. This message dialog appears: "Do you want to require encryption?"



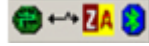
Confirm with **OK**

7. Go to the **Web** application
8. Choose an Internet URL

9. You will be asked to connect
10. A message box "Connecting to BT" will shortly appear
11. On PC side the Bluetooth icon will turn to green
12. Congratulations: now you can surf with your Nokia 3230 !

On the PC:

You will notice that the mRouter icon is moving and turning into a squared wave, when you are surfing with your Nokia 3230.



### **Questions and answers**

**Q: The Bluetooth Tray Icon is green, but on the phone there's a dialog box showing *Connecting via 'Bt'*. The dialog box doesn't disappear. Why?**

**A:** This means that you haven't launched the mRouter software on PC side. The phone is continuously searching the access point with the ip address 169.254.1.68. You should now launch the mRouter software. Once you did it, don't forget to launch your HTTP Proxy.

**Q: I'm getting a "Web connection time out" although I have correctly launched mRouter. What could be wrong?**

**A:** If you have launched the mRouter, your phone has established the Bluetooth connection. To retrieve HTTP packets or to surf, we need a proxy. We set the proxy (in Phone's Connection Settings) on port 6588 (used by AnalogX Proxy). To solve the problem, you just need to launch your HTTP Proxy (in our case AnalogX Proxy).

**Q: Nothing is working / I succeeded in letting gnuBox work, but now nothing is working and I receive a message "Already in use"**

**A:** You can try to close your Web application and to reconnect. If you still have problems, try to exit gnuBox and to close the current connection manually (**Connectivity->Connection Manager->Bt**).

What might also help is to temporary set the Bluetooth connection to **Off (Connectivity->Bluetooth->Bluetooth->Off)** and re-put it to **On**.

If really nothing is working, you can try the third solution: restart your phone (although it shouldn't help a lot, perhaps just to re-init the Bluetooth phone's services) and delete the **Bt** access point. Then follow the Step to step instructions to reload the CommDB.

### **Comments**

This document will be soon available in French and German  
Thanks to Xan for having created the gnuBox

If you have any questions / correction proposals related to this document, please feel free to contact me:

Deru Matthieu matd@collectool.com <http://www.mat-d.com/Symbian/>